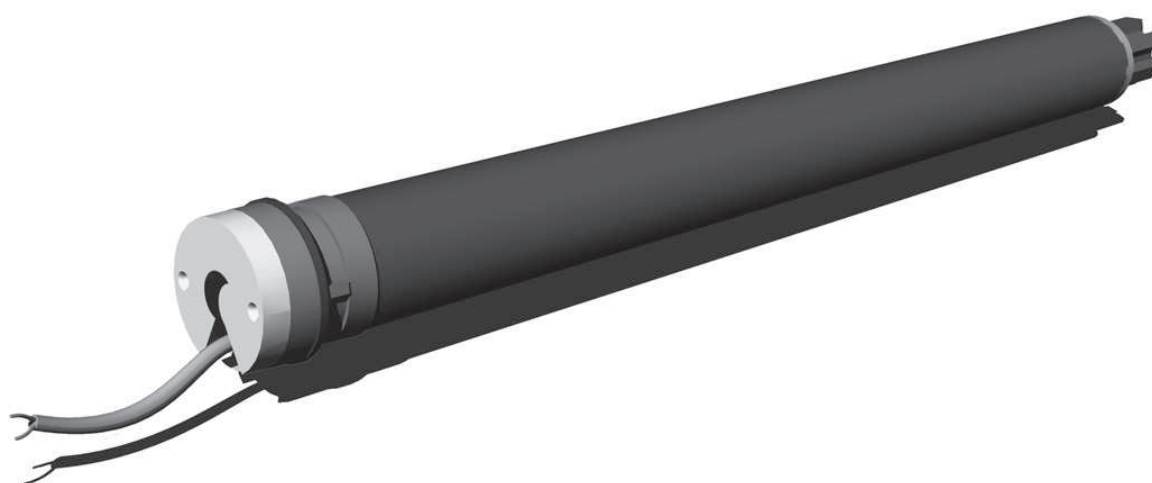


www.somfy.com



Sonesse® 40 RTS



BlindsandCurtainsonline

Ref: 5064823A

HOME
MOTION BY

somfy®

SOMFY hereby declares that this product complies with the essential requirements and other relevant provisions of Directive 1999/5/EC. A Declaration of Conformity is available at the web address www.somfy.com/CE. Suitable for use in EU, CH and NO

CONTENT

1 Introduction

2 Safety

2.1 General information

2.2 General safety advice

3 Wiring

4 Commissioning

4.1 Programming the RTS transmitter

4.2 Checking the rotation direction

4.3 Adjusting the end limits

4.4 Recording the RTS transmitter

4.5 Favorite position : MY position

Recording MY position.

5 Use

5.1 Up, Down, My: In roller mode

6 Modifying the settings

6.1 End limit re-adjustment

6.2 Favorite position : MY position

Changing the MY position / Delete the MY position

6.3 Modifying the motor rotation direction

6.4 Modifying the wheel rotation direction

6.5 Scroll wheel increment setting

6.6 Replacement of a lost remote control

6.7 Adding/Deleting RTS transmitter

6.8 Adding/Deleting RTS sensors

6.9 Erase the memory of the motor

7 Troubleshooting

8 Technical data

9 Environment

1 Introduction

Product Description

The Sonesse® 40 is a motor specially dedicated to interior applications.

The Sonesse® 40 motor range can motorize all interior applications: Roller shades, Venetian blinds, Roman shades, Pleated & cellular shades, Projection screens.

The Sonesse® 40 is designed to ensure quiet operations.

Warning: The Sonesse® 40 isn't compatible with wind functions.

2 Safety

2.1 General information

- This Somfy product must be installed by a professional motorisation and home automation installer, for whom these instructions are intended.
- Before installation, check that this product is compatible with the associated equipment and accessories.
- These instructions describe how to install, commission and use this product.
- Moreover, the installer must comply with current standards and legislation in the country in which the product is being installed, and inform his customers of the operating and maintenance conditions for the product.
- Any use outside the sphere of application specified by Somfy is not approved. Such use, or any failure to comply with the instructions given herein will invalidate the warranty, and Somfy refuses to accept liability.

2.2 Specific safety advice

The safety instructions that must be observed, besides the usual rules, are explained in these instructions and in the attached «Safety Instructions» document.

Never immerse the motor in liquid!



Avoid impacts!



Never drill holes in the motor!



Do not drop it!

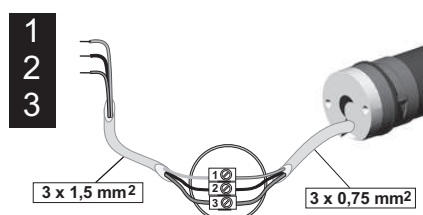
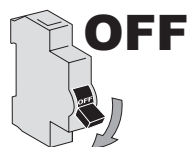


3 Wiring

Wiring

- 1) Switch off the power supply.
- 2) Connect the motor according to the information in the table below.

RANGE	1 Neutral	2 Live	3 Earth
230V-50HZ	Blue	Brown	NA
120V-60HZ	White	Black	Green
220V-60HZ	Blue	Brown	NA



4 Commissioning

4.1 Programming the RTS transmitter

Switch on the power supply.

Press the UP and DOWN buttons simultaneously on the RTS transmitter: the jogs (move up and down briefly) and the transmitter is preprogrammed in the motor

4.2 Checking the rotation direction

1) Press the RTS transmitter UP button:
a) If the shade is raised (a), the rotation direction is correct: move to the section entitled «Adjusting the end limits».

b) If the shade is lowered (b), the rotation direction is incorrect: move to the next step.

2) Press the RTS transmitter MY button until the shade jogs: the rotation direction has been modified.

3) Press the RTS transmitter UP button to check the rotation direction.

4.3 Adjusting the end limits

The limits can be set in any sequence.

1) Press and hold the UP button to move the shade to the desired Up position. If necessary adjust the Up position, using the UP or DOWN buttons.

2) Press the MY and DOWN buttons simultaneously and release them once the shade begins to move. The Up limit is memorized.

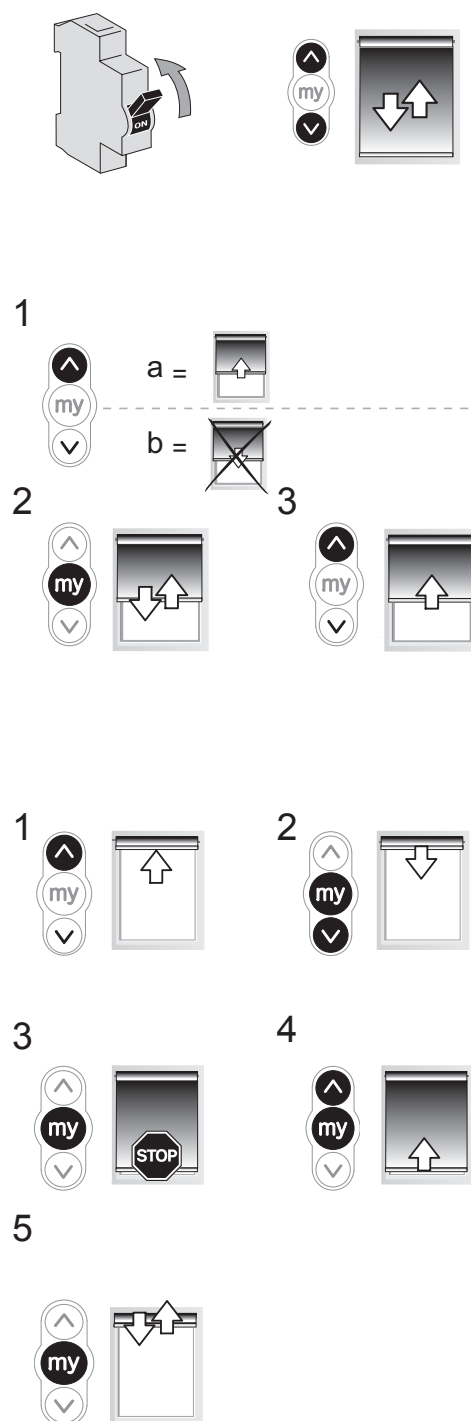
3) Press the MY button when it reaches the desired Down position.

If necessary adjust the Down position, using the UP or DOWN buttons.

4) Press the MY and UP buttons simultaneously and release them when the shade begins to move.

The Down limit is memorized. The shade moves up and will stop at its upper limit.

5) To confirm the end limits press and hold the MY button until the shade jogs. The end limits are recorded.



4.4 Recording the RTS transmitter

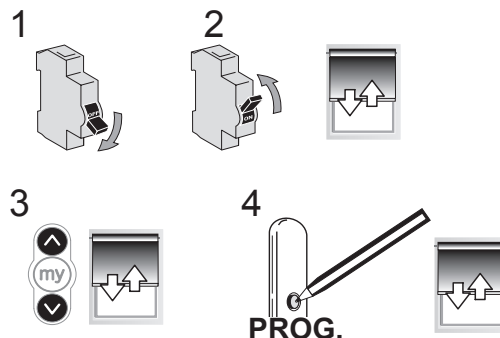
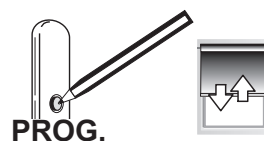
After recording the end limit:

Press briefly the programming button on the back of the transmitter. The shade jogs.

The transmitter is recorded.

OR

- 1) Switch off the current.
- 2) Switch on the current. The shade jogs.
- 3) Simultaneously press the UP and DOWN buttons on the RTS transmitter. The shade jogs.
- 4) Press briefly the programming button on the back of the transmitter. The transmitter is recorded.



4.5 Favorite position: MY position Recording MY position.

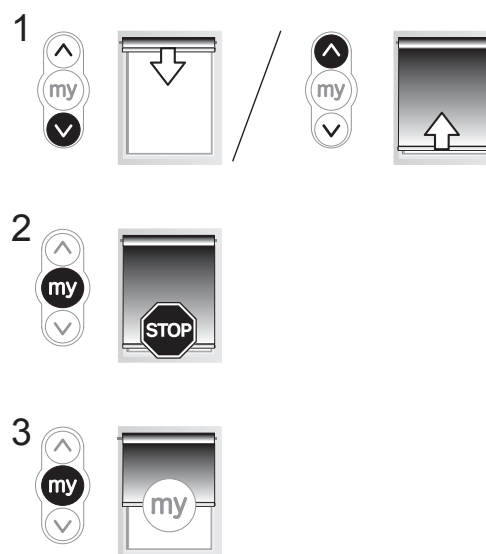
To set the MY position, move the shade to the desired position with the UP and DOWN buttons then press the MY button until the shade jogs.



5 Use

5.1 Up, Down, My: In roller mode

- 1) To move the shade from a limit to the other limit, press briefly the UP or DOWN button.
- 2) To stop the shade, press the MY button.
- 3) To move the shade to the MY position, press briefly the MY button.



6 Modifying the settings

6.1 End limit re-adjustment UP LIMIT

- 1) Press the UP button, to move the shade to the limit to be readjusted.
- 2) Press and hold the UP and DOWN buttons simultaneously until the shade jogs.
- 3) Press and hold the UP or DOWN button to move the shade to the new desired position.
- 4) To confirm the new limit press and hold the MY button until the shade jogs.

DOWN LIMIT

- 1) Press the DOWN button to move the shade to the limit to be readjusted.
- 2) Press and hold the UP and DOWN buttons simultaneously until the shade jogs.
- 3) Press and hold the UP or DOWN button to move the shade to the new desired position.
- 4) To confirm the new limit press and hold the MY button until the shade jogs.

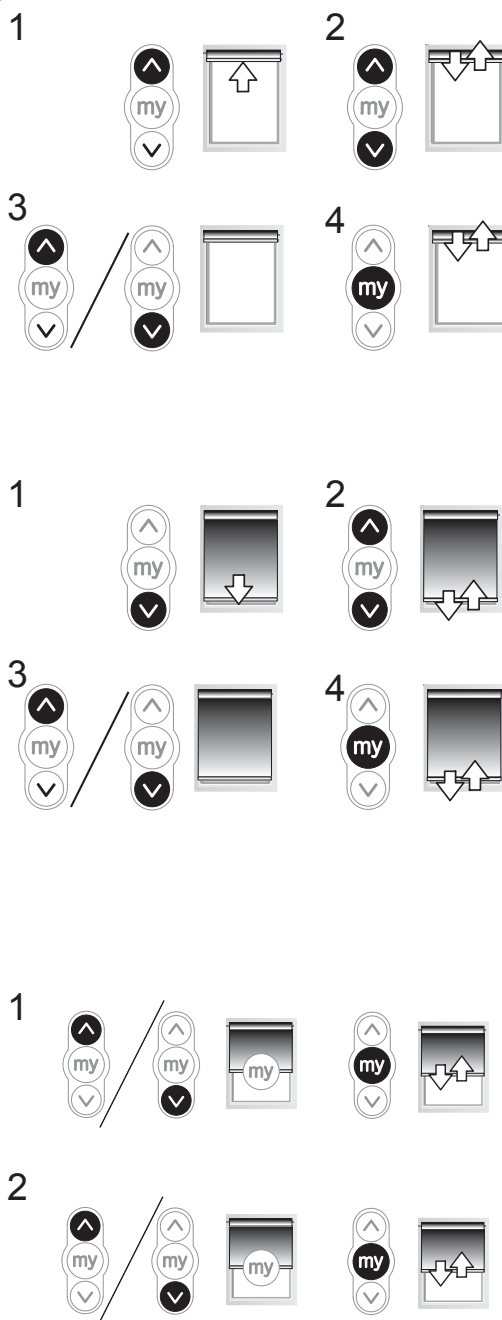
6.2 Favorite position : MY position

1) Changing the MY position

To change the MY position go to the new desired MY position with the UP and DOWN buttons then press the MY button until the shade jogs.

2) Deleting the MY position

Press the MY button to move to this position
To delete the MY position, move to this position and press the MY button until the shade jogs.

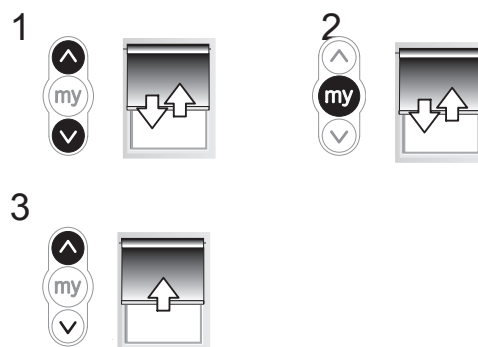


6.3 Modifying the motor rotation direction

Move the shade away from the end limits.

- 1) Press the UP and DOWN buttons simultaneously until the shade jogs.
- 2) Press the MY button until the shade jogs to reverse the rotation direction.
- 3) Press the UP button to check the new rotation direction.

The motor rotation direction is reversed.

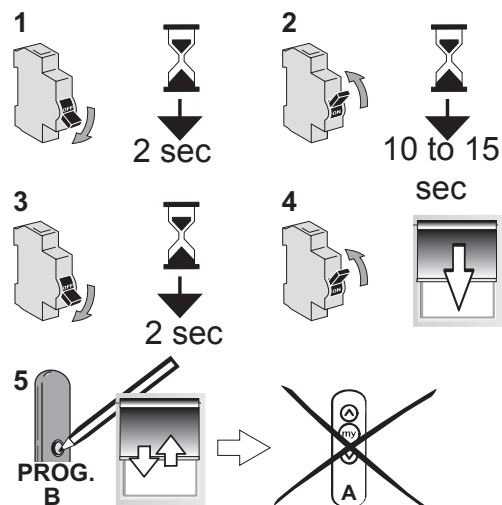


6.4 Replacement of a lost remote control

N.B.: This reset deletes all transmitters programmed, but end-limits, intermediate position and sensors are retained.

N.B.: Only switch off the current for the motor where a transmitter is lost.

- 1) Cut the power supply for 2 seconds.
- 2) Switch the power supply back on for 10 to 15 seconds.
- 3) Cut the power supply for 2 seconds.
- 4) Switch the power supply back on: the shade moves during 5 seconds (If the shade position is an end limit, the behavior of the shade will be a jog).
- 5) Press the RTS transmitter (B) PROG button until the shade jogs: all the RTS transmitters are cleared and the new RTS transmitter is programmed in the motor.

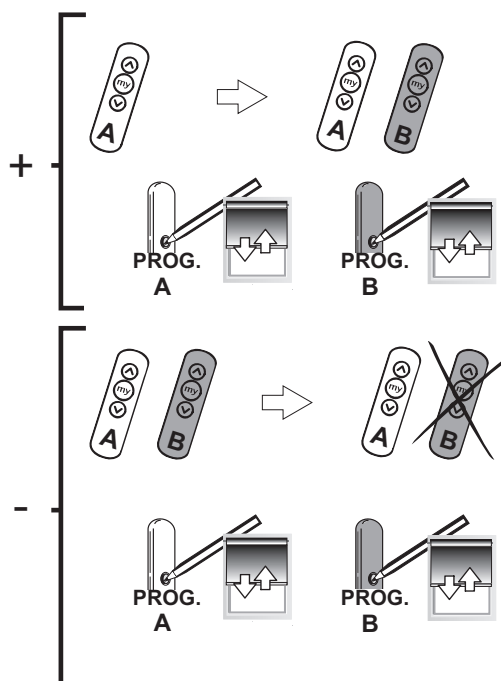


6.5 Adding/Deleting RTS transmitter

Find an RTS transmitter programmed in the motor.

Press and hold the RTS programmed transmitter (A) PROG button until the shade jogs: the motor is in programming mode.

Press briefly the RTS transmitter (B) PROG button to add or delete this transmitter: the shade jogs and the RTS transmitter is programmed or deleted from the motor.

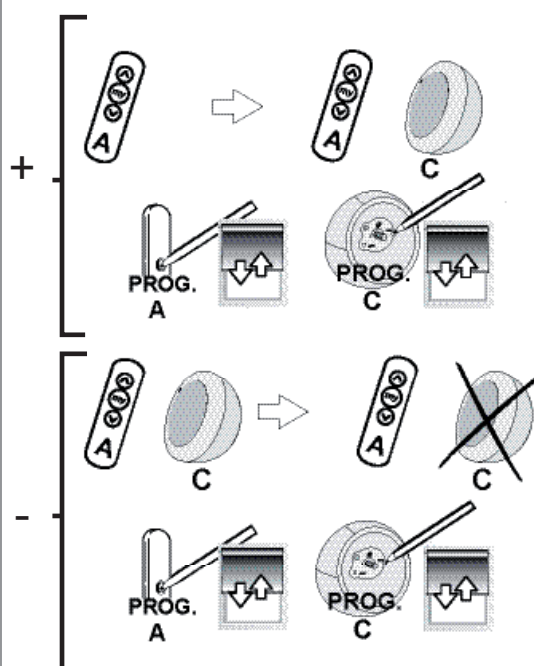


6.6 Adding/Deleting RTS sensors

Find an RTS transmitter programmed in the motor.

Press and hold the RTS programmed transmitter (A) PROG button until the shade jogs: the motor is in programming mode.

Press briefly the RTS sensor (C) PROG button to add or delete this sensor: the shade jogs and the RTS sensor is programmed or deleted from the motor.



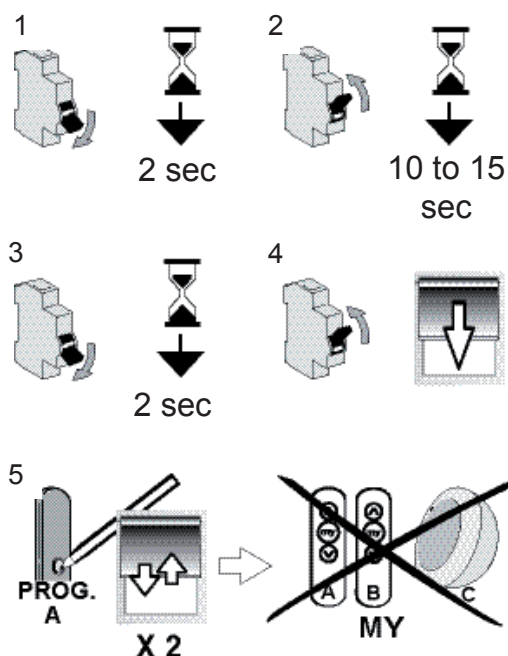
6.7 Erase the memory of the motor.

N.B.: This reset deletes all RTS transmitters, RTS sensors, end-limits and intermediate position programmed.

N.B.: Only switch off the current for the motor to be reset!

N.B.: Before cutting the power, move the shade to the middle position.

- 1) Cut the power supply for 2 seconds.
- 2) Switch the power supply back on for 10 to 15 seconds.
- 3) Cut the power supply for 2 seconds.
- 4) Switch the power supply back on: the shade moves during 5 seconds (If the shade position is an end limit, the behavior of the shade will be a jog).
- 5) Press the RTS transmitter (A) PROG button until the shade jogs twice: all the RTS transmitters, RTS sensors, end-limits and intermediate position are cleared.



7 Troubleshooting

The motor doesn't work:

Verify:

- The wiring of the motor.
- The power supply specifications.
- The compatibility of the control
- The heat generated (wait for the cooling of the motor).

The equipment stops too soon:

Verify:

- The operation of end-limits during the rotation of the motor.
- The crown is properly fitted to the tube.
- The end-limits of the motor are properly adjusted.
- That the shade is within the recommended weight limit.

The equipment is noisy:

Verify that:

- The wheel and the crown are well adapted to the used tube.
- The mechanical plays between motor, accessories, tube and end of tube must be decreased to the maximum.
- The wheel is properly fixed to the tube.
- The equipment is not constrained between the brackets.
- The length of the notch is adapted to the motor hook or to the used crown.
- Debris, screws or other are not in your tube.
- The power supply specifications.
- The temperature of the environment is in conformity with the operating temperature.

8 Technical data

Power supply	230V/50Hz - 120V/60Hz - 220V/60Hz
Frequency	433,42MHz
Operating temperature	0°C / 60 °C
Protection rating	IP44
Maximum number of transmitters	12
Maximum number of sensors	3

9 Environment



Damaged electric products and batteries should not be disposed of with normal household waste.

Make sure to drop them in specially provided containers or at an authorized organization that will ensure they are recycled